

JETOPTERA

Introducing the J-500

Your reliable bladeless, silent, fast and safe aerial cargo

VERTICAL TAKE OFF/LANDING

Powered by a Fluidic Propulsive System™ which eliminates propellers or rotors and enables VTOL from locations inaccessible to helicopters or multi-rotors; the thrusters are swivable and the turbocompressors are designed in-house

YOUR SOLUTION TO RAPID, HEAVY CARGO LOGISTICS

The Prandtl or Box Wing architecture combined with the canard and FPS™ yields excellent aerodynamics and a forward speed 2-3x faster than a multirotor, silently; the J-series can land in more spaces than a large wingspan multirotor cargo UAS with DEP, without worrying about prop strike or safety of personnel

QUIET PROPULSION

Our Fluidic Propulsive System™ thrusters do not chop the air like a propeller; the noise emitted by these thrust augmenting proprietary ejectors is atonal, resembling the wind. This enables us to deploy the system without restrictions related to noise. Using Jet A or Diesel today and SAF compatible, the J-500 uses reliable turbines and does not depend on magic batteries.

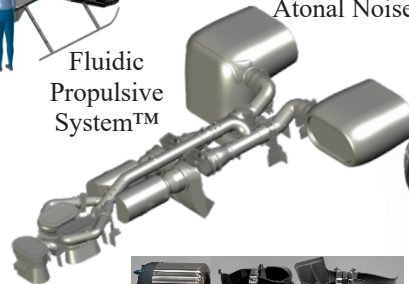
Modular Carbon Airframe



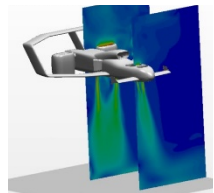
Rear loading Cargo Bay



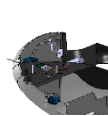
Fluidic Propulsive System™



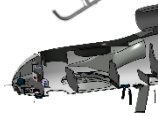
Atonal Noise



Favorable Lift Footprint



Advanced Avionics, Datalink & Navigation



Fixed Front 75 lbf-class FPS™ thruster-ejectors



Reliable FTC-250 turbocompressor/turbofan



Swiveling 250 lbf-class ultralight FPS™ thruster-ejectors

General characteristics

- **Length:** 3.8 m (12.5 ft)
- **Wingspan:** 3.7 m (12 ft)
- **Height:** 1.34 m (4.4 ft)
- **Empty weight:** 146 kg (322 lb)
- **MAX takeoff weight:** 227 kg (500 lb)
- **MAX Payload:** 50 kg (110 lb)
- **MAX Fuel capacity:** 88 liters (22.5 US gallons), 70 kg (154 lb)
- **Propulsion:** 5 FPS™ thrusters, 3x75 lbf class + 2x250lbf class (AFT)
- **Powerplant:** Jetoptera Proprietary FTC-250 turbocompressors
- **MAX Speed:** 200 ktas
- **MAX ALT:** 5,000 m (16,400 ft)
- **MAX Range:** 150 nm
- **Tone-free Noise:** up to 30 dBa lower vs. bladed equivalent power system

This document provided under EAR 737.4(3)

Jetoptera, Inc. 123 2nd Ave South, Suite 200, Edmonds, WA 98020
CAGE: 7N2L9 DUNS: 080331629 Email: info@jetoptera.com

